

**AERODROME
CHART**

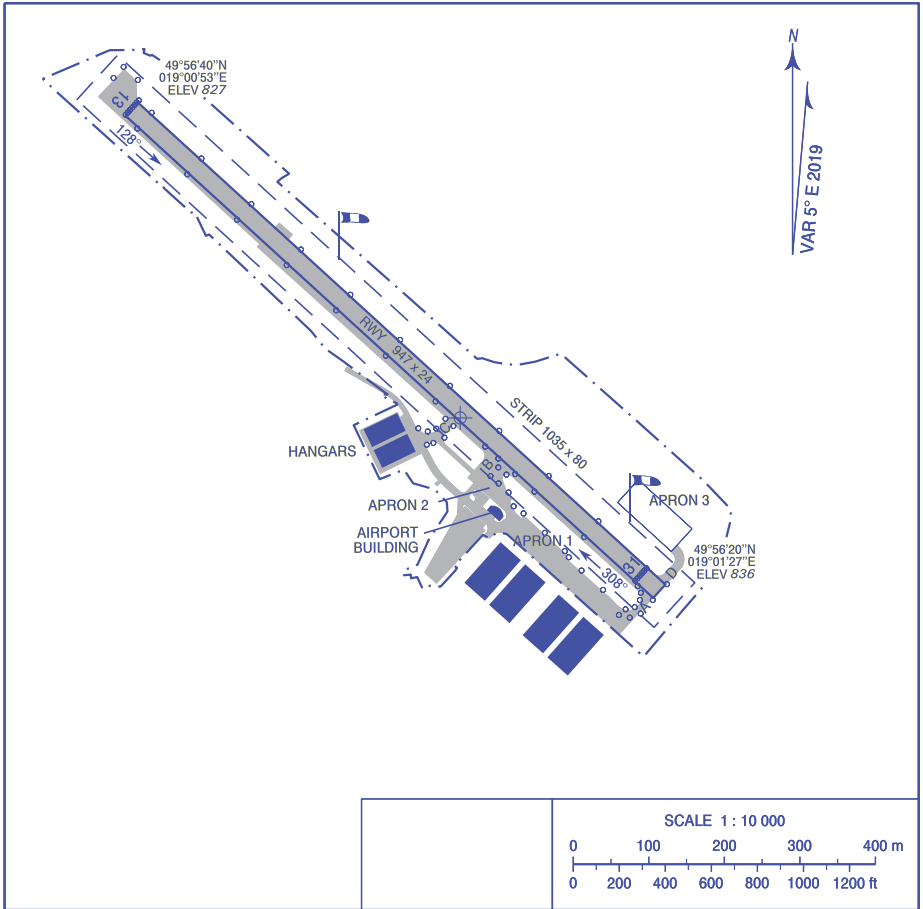
49°56'27"N
019°01'15"E

AD ELEV 836 ft

RADIO 127.730

Kaniów

Correction: VAR, AD ELEV, RWY, GEO, MAG, TORA, LDA changed. APN, TWY changed.



RWY	TRUE (°)	MAG (°)	DIMENSIONS (m)	SURFACE	MTOW / STRENGTH	TORA (m)	LDA (m)
13	133	128	947 x 24	ASPHALT/ CONCRETE	5700 kg	914	914
31	313	308				947	914